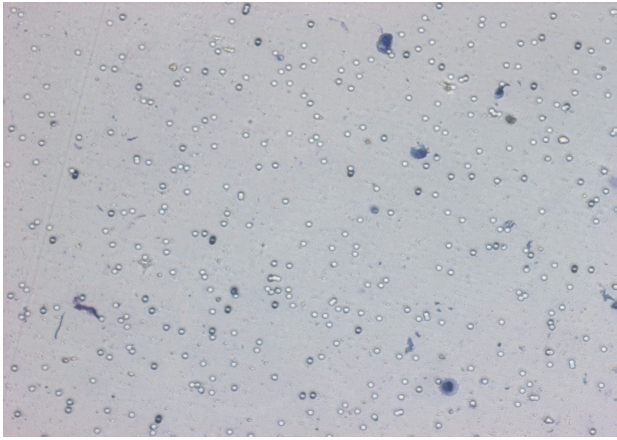


Supplementary Material

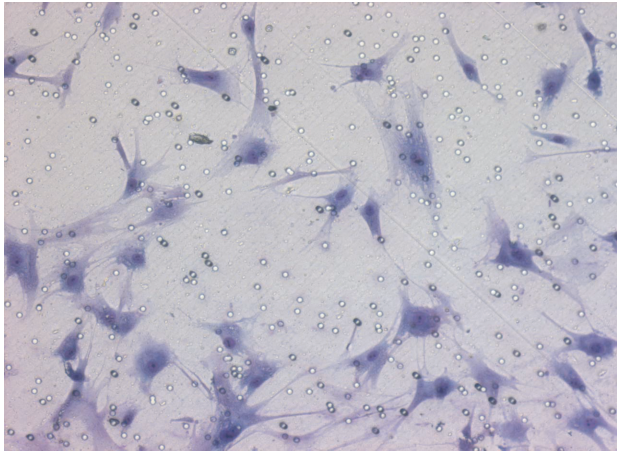
Additional File 1: xls

***Supplementary Table S1: Total microarray gene list of up-regulated targets
in invasive cells.***

A

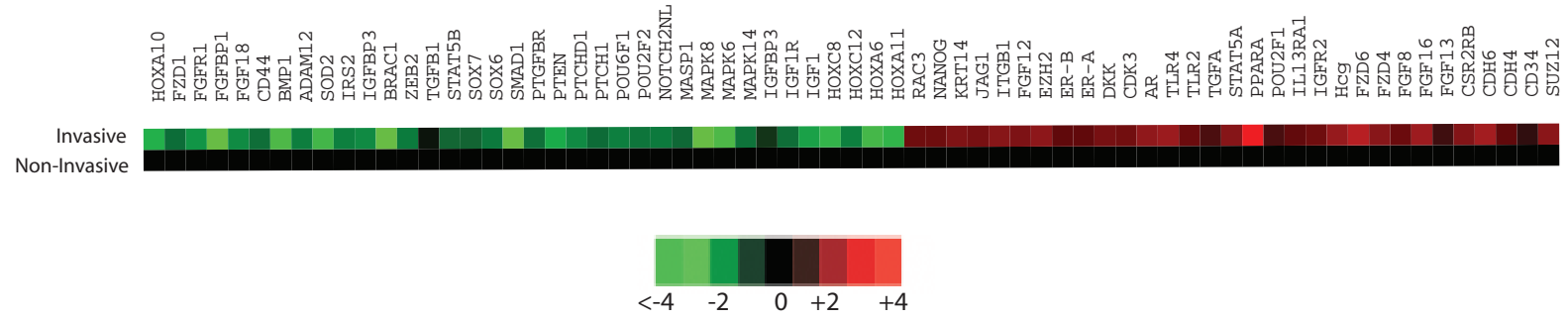


Control Insert

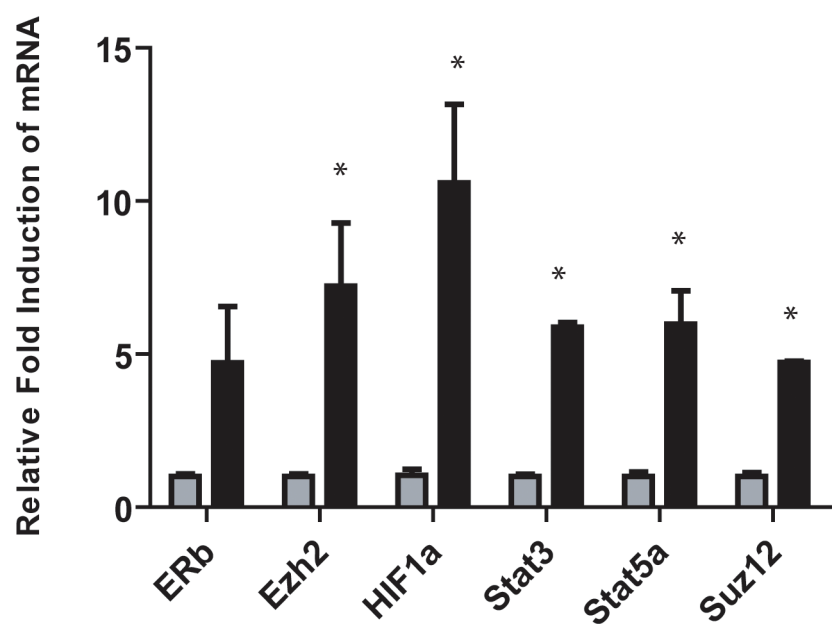


Matrigel Insert

B

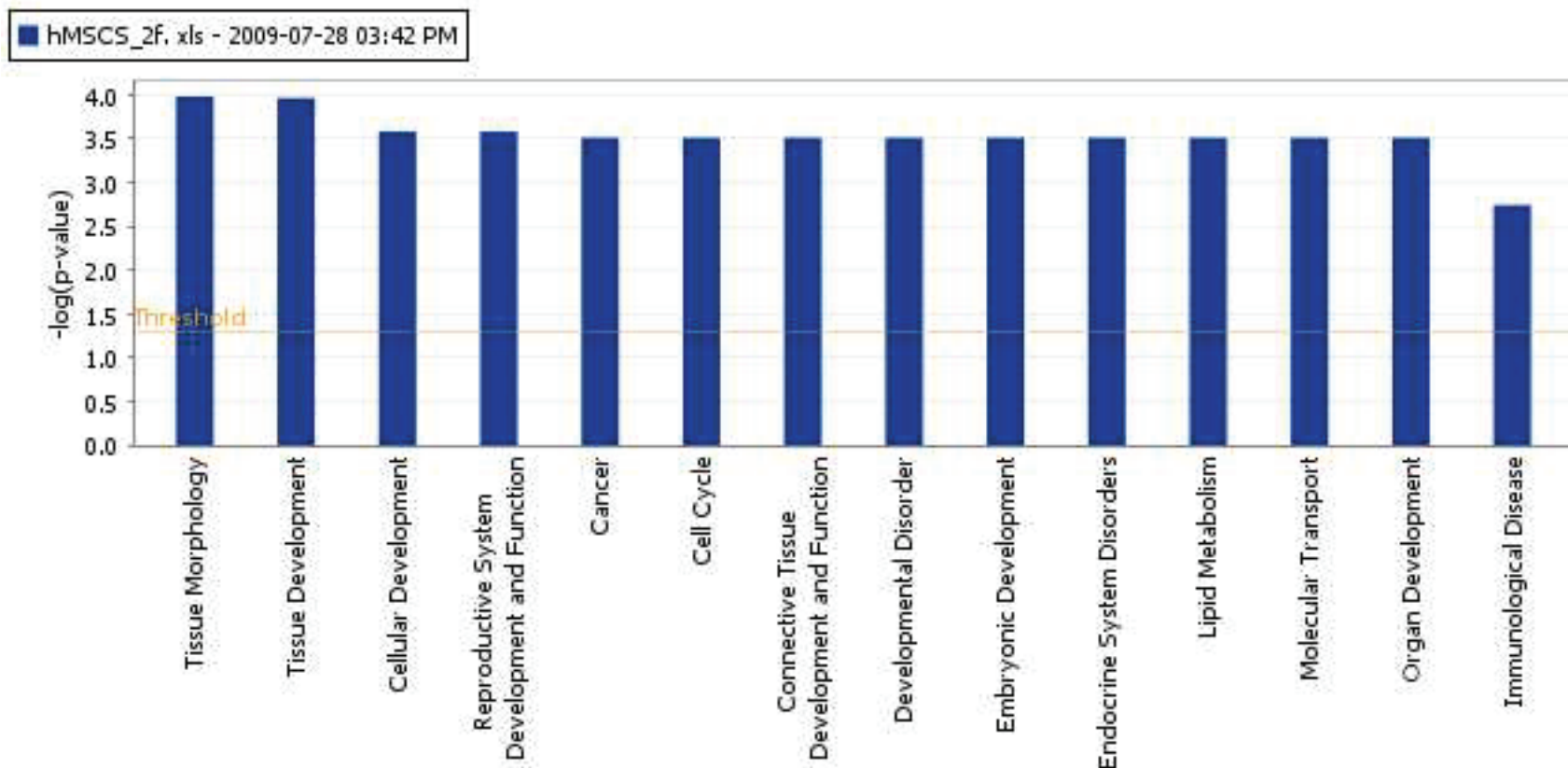


C



A

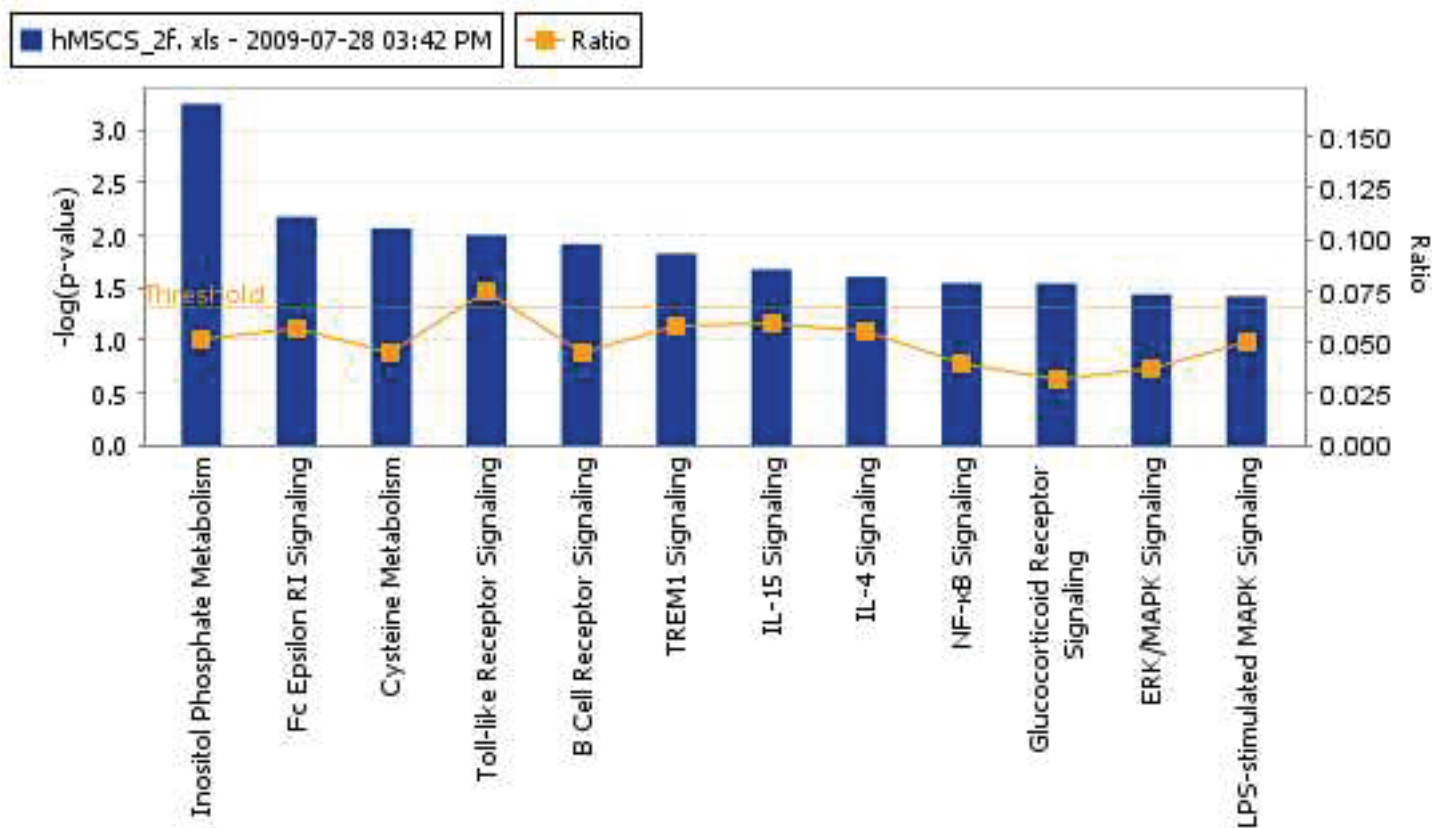
Analysis: hMSCS_2f.xls - 2009-07-28 03:42 PM



© 2000-2009 Ingenuity Systems, Inc. All rights reserved.

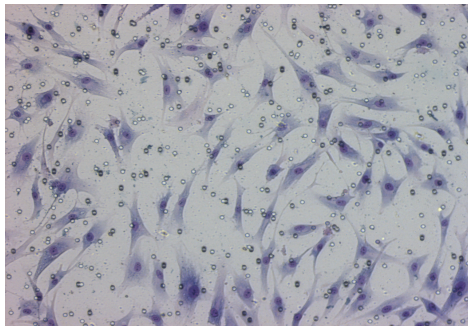
B

Analysis: hMSCS_2f.xls - 2009-07-28 03:42 PM

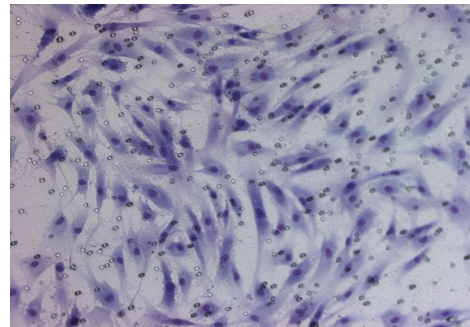


© 2000-2009 Ingenuity Systems, Inc. All rights reserved.

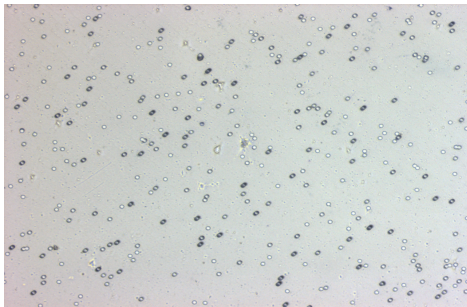
A



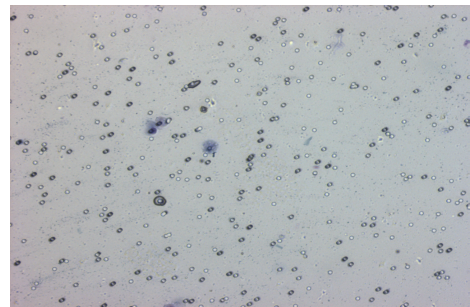
Control = 40/field



100 ng/mL IL-6 = 60/field



1 uM Stattic = 0/field



Stattic+IL-6 = 3/field

B

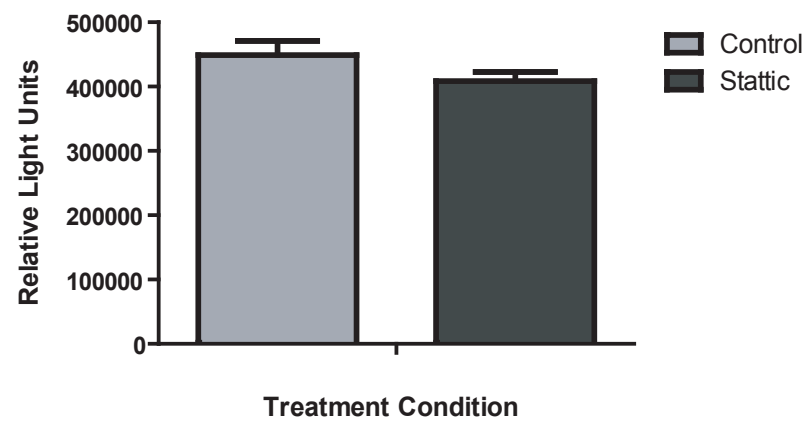


Table 1: Genes significantly up-regulated in invasive hMSCs.

Agilent ID	hMSC Non-Invasive	hMSC_Invasive	Fold Change	UNIQID	Gene Name
A_24_P919916	-1.7055	5.8604	7.5659	WID:6488014	PTF1A
A_23_P42065	-2.8123	0.9734	3.7857	WID:6484664	TNFRSF21
A_23_P30736	-2.4033	0.8032	3.2065	WID:6496619	HLA-DOB
A_23_P60306	-1.43	1.7307	3.1607	WID:6502707	TLR4
A_23_P113111	-1.7102	1.2511	2.9613	WID:6488464	AR
A_23_P77223	-1.0517	1.9013	2.953	WID:6513234	MESP1
A_23_P210763	-2.7955	0.1168	2.9123	WID:6486716	JAG1
A_24_P38387	-3.0463	-0.1468	2.8995	WID:6504089	NDRG1
A_32_P122579	0.6126	3.5082	2.8956	WID:6480399	EZH2
A_23_P207367	-2.2092	0.5955	2.8047	WID:6481655	STAT5A
A_23_P84320	-1.8188	0.8944	2.7132	WID:6495148	HMX1
A_24_P265346	-2.8338	-0.1382	2.6956	WID:6504873	KRT14
A_23_P77440	-2.7784	-0.1771	2.6013	WID:6502102	NFATC3
A_32_P160537	2.0805	4.6637	2.5832	WID:6492904	FGF12
A_23_P206441	-2.1401	0.3806	2.5207	WID:6586963	FANCA
A_24_P598836	1.5009	3.9523	2.4514	WID:6517296	ITGB1
A_23_P214011	-1.9233	0.4855	2.4088	WID:6494488	CDH6
A_23_P23947	-1.2674	1.096	2.3634	WID:6489062	MAP3K8
A_23_P156953	-1.7175	0.6025	2.32	WID:6517216	IGF2R
A_23_P125001	-0.4863	1.8332	2.3195	WID:6482994	RAC3
A_23_P204640	-4.0766	-1.7784	2.2982	WID:6487751	NANOG
A_23_P92499	0.3371	2.5755	2.2384	WID:6486692	TLR2
A_24_P889103	-2.3142	0.6211	2.9353	WID:6516766	SUZ12P
A-23_P54100	-1.5936	0.4465	2.0401	WID:6506930	ESR2
A_23_P137196	-1.3207	0.6947	2.0154	WID:6488748	IL13RA1
A_23_P46964	0.0039	1.6847	1.6808	WID:6478939	HIF1AN
A_23_P100795	-0.1833	1.42	1.6083	WID:6480615	STAT3

Agilent ID	hMSC Non-Invasive	hMSC_Invasive	Fold Change
A_24_P100368	-2.8141	2.5793	-0.2348
A_23_P375147	-1.3907	2.0936	0.7029
A_23_P40952	-0.3712	2.4003	2.0291
A_32_P201564	-1.5386	3.5079	1.9693
A_23_P348257	-3.6084	3.8299	0.2215
A_24_P938352	-0.9709	2.2552	1.2843
A_24_P917123	-2.8834	2.8254	-0.058
A_23_P153070	-2.5719	2.3637	-0.2082
A_24_P900730	-0.8469	2.2687	1.4218
A_23_P70328	-2.6156	2.1372	-0.4784
A_23_P6335	-2.7309	2.5134	-0.2175
A_24_P118489	-2.3329	2.3421	0.0092
A_24_P124325	-2.126	2.3518	0.2258
A_32_P6233	-2.3891	3.1514	0.7623
A_23_P64173	-2.8738	2.0805	-0.7933
A_23_P378526	-1.815	2.574	0.759
A_24_P291426	-3.0932	2.7715	-0.3217
A_32_P224234	-0.8372	2.1495	1.3123
A_23_P397347	-2.5977	2.5015	-0.0962
A_23_P309739	-0.8583	2.1154	1.2571
A_23_P120899	-1.3018	2.7147	1.4129
A_32_P122579	0.6126	2.8956	3.5082
A_23_P426292	-1.5019	2.7476	1.2457
A_24_P472055	-3.2276	2.9147	-0.3129
A_24_P59899	-1.0271	2.2193	1.1922
A_24_P798709	-3.0812	3.1157	0.0345
A_24_P262201	-3.2114	2.2854	-0.926
A_24_P565908	-0.9116	2.65	1.7384
A_32_P55438	-0.7223	2.1052	1.3829
A_23_P122216	-2.9359	2.9411	0.0052
A_24_P337397	-2.8944	2.7115	-0.1829
A_24_P132019	-1.6932	2.0398	0.3466
A_23_P89155	-1.212	2.4377	1.2257
A_32_P12562	-2.7512	2.0276	-0.7236
A_32_P198029	-2.2024	2.4827	0.2803
A_24_P191664	-2.5537	2.2455	-0.3082
A_24_P40978	-1.9569	4.9494	2.9925
A_23_P217611	-2.5126	2.463	-0.0496
A_32_P19193	-2.2334	5.5567	3.3233
A_23_P328729	-3.0277	2.7465	-0.2812
A_23_P371966	-2.7638	3.0017	0.2379
A_23_P92499	0.3371	2.2384	2.5755
A_23_P131240	-2.495	4.5778	2.0828
A_23_P252283	-1.086	2.1404	1.0544
A_23_P97923	0.3775	2.0609	2.4384
A_32_P4433	-0.8786	2.6889	1.8103
A_23_P60306	-1.43	3.1607	1.7307
A_24_P108262	-2.3559	3.0275	0.6716
A_32_P188178	-1.2065	2.7781	1.5716
A_24_P943957	-1.3555	2.6665	1.311
A_24_P107336	-2.4053	2.0396	-0.3657

A_23_P212360	-2.5493	3.3784	0.8291
A_32_P15464	-2.4985	2.8951	0.3966
A_23_P215296	-1.4803	2.9501	1.4698
A_23_P161719	-2.6808	2.7299	0.0491
A_23_P17192	-2.6464	3.9865	1.3401
A_24_P196851	-3.5843	2.0983	-1.486
A_24_P826348	-4.4214	3.1279	-1.2935
A_23_P39971	-1.592	2.0704	0.4784
A_32_P409919	-1.9337	2.297	0.3633
A_24_P485219	-2.8606	2.0048	-0.8558
A_23_P404893	-0.8653	2.006	1.1407
A_32_P190682	-4.5588	3.1978	-1.361
A_24_P598836	1.5009	2.4514	3.9523
A_23_P16354	-0.7609	2.799	2.0381
A_32_P98940	-2.9393	2.3716	-0.5677
A_23_P3823	-2.8434	3.0685	0.2251
A_24_P85942	-1.943	2.2909	0.3479
A_24_P113131	-1.9627	2.3295	0.3668
A_23_P117190	-4.3772	2.1152	-2.262
A_23_P70634	-0.6002	2.9671	2.3669
A_23_P372331	-1.7993	2.3791	0.5798
A_32_P184746	-2.4516	3.1026	0.651
A_24_P406714	-3.002	2.4881	-0.5139
A_32_P115505	-2.8139	2.0655	-0.7484
A_23_P354193	-2.0593	3.4694	1.4101
A_23_P153783	-3.0277	2.2711	-0.7566
A_32_P224638	-2.8875	2.2905	-0.597
A_23_P88554	-1.4979	2.0485	0.5506
A_23_P432610	-0.9997	3.349	2.3493
A_24_P145633	-4.0062	2.7557	-1.2505
A_24_P747443	-0.2984	2.6184	2.32
A_24_P557479	-1.4598	2.1564	0.6966
A_32_P201979	-1.7319	2.3007	0.5688
A_24_P346431	-2.0521	2.2017	0.1496
A_24_P253827	-1.109	2.123	1.014
A_23_P100754	-2.0409	2.3504	0.3095
A_23_P144639	-2.493	2.0586	-0.4344
A_23_P58251	-2.2199	2.6335	0.4136
A_24_P607107	-1.7616	2.3616	0.6
A_24_P403168	-1.795	3.4046	1.6096
A_23_P71530	-2.9465	2.9412	-0.0053
A_23_P15226	-0.1308	3.8485	3.7177
A_24_P634530	-2.9918	2.0372	-0.9546
A_24_P307896	-3.0044	2.6496	-0.3548
A_24_P95439	-1.5136	2.3918	0.8782
A_24_P919668	1.6829	2.2766	3.9595
A_23_P371787	-3.0779	2.4543	-0.6236
A_24_P918317	-2.3078	2.4615	0.1537
A_23_P27048	-1.8876	2.0069	0.1193
A_23_P210224	-2.8371	2.1827	-0.6544
A_23_P41854	-0.7053	2.0393	1.334
A_23_P132378	-1.974	2.3223	0.3483

A_23_P24616	-0.6804	2.768	2.0876
A_23_P163258	-2.9977	2.0898	-0.9079
A_23_P377376	0.6482	2.1329	2.7811
A_23_P113111	-1.7102	2.9613	1.2511
A_23_P165783	-3.4121	2.6141	-0.798
A_23_P1505	-5.0275	3.8059	-1.2216
A_23_P55731	-2.1115	3.065	0.9535
A_23_P360964	-1.8434	2.6547	0.8113
A_23_P18123	-3.4476	2.148	-1.2996
A_24_P887857	-1.5511	2.3525	0.8014
A_23_P385105	-1.5559	2.601	1.0451
A_23_P126075	-1.3989	2.0705	0.6716
A_23_P102508	-2.2415	2.9884	0.7469
A_24_P225961	-0.1668	2.5311	2.3643
A_23_P122216	-3.6721	2.3348	-1.3373
A_23_P165343	-2.2958	2.6348	0.339
A_24_P159548	-0.9296	2.0954	1.1658
A_23_P422831	-0.8419	2.619	1.7771
A_32_P77989	-1.7489	3.1774	1.4285
A_23_P103062	-1.7306	2.0561	0.3255
A_24_P89038	-2.5341	2.1093	-0.4248
A_23_P376188	-0.6552	2.2856	1.6304
A_24_P32085	-4.0209	2.1101	-1.9108
A_32_P169316	-0.5939	2.72	2.1261
A_23_P82913	-2.6074	3.2896	0.6822
A_24_P288979	-1.383	2.2767	0.8937
A_23_P18901	-4.7712	2.8041	-1.9671
A_24_P318836	-1.5972	2.1507	0.5535
A_23_P351844	-3.2106	2.0825	-1.1281
A_23_P97892	-2.7571	2.6804	-0.0767
A_24_P64918	-1.843	2.5671	0.7241
A_23_P145644	-3.0254	2.8869	-0.1385
A_23_P211136	-1.2745	2.483	1.2085
A_23_P101623	-2.1303	2.0249	-0.1054
A_23_P252928	-4.7443	2.8943	-1.85
A_23_P132277	-4.7255	3.5619	-1.1636
A_24_P74753	-0.494	2.5673	2.0733
A_24_P339664	-1.8015	2.7491	0.9476
A_32_P171232	-2.6108	2.1874	-0.4234
A_24_P119141	-0.2214	2.5669	2.3455
A_23_P411321	-1.3446	2.2214	0.8768
A_24_P49421	0.2051	2.4282	2.6333
A_23_P109322	-1.8017	2.8921	1.0904
A_23_P204640	-4.0766	2.2982	-1.7784
A_23_P135157	-1.2285	2.136	0.9075
A_24_P156288	-3.0642	2.4207	-0.6435
A_23_P502320	-1.5777	2.2588	0.6811
A_24_P315921	-3.6616	2.0417	-1.6199
A_23_P137196	-1.3207	2.0154	0.6947
A_24_P519504	-2.4377	2.1179	-0.3198
A_24_P140204	-7.3953	4.8645	-2.5308
A_23_P42065	-2.8123	3.7857	0.9734

A_23_P123763	-1.1004	2.249	1.1486
A_32_P107876	-1.0842	2.0844	1.0002
A_32_P160537	2.0805	2.5832	4.6637
A_23_P77440	-2.7784	2.6013	-0.1771
A_24_P235131	-1.417	2.1879	0.7709
A_24_P306214	-2.5216	3.946	1.4244
A_32_P211558	-1.2665	2.4949	1.2284
A_32_P175349	-1.8288	2.9656	1.1368
A_23_P84320	-1.8188	2.7132	0.8944
A_23_P339309	0.2281	2.5611	2.7892
A_23_P85201	-1.6852	3.1951	1.5099
A_24_P110601	-3.9476	2.2543	-1.6933
A_23_P54100	-1.5936	2.0401	0.4465
A_23_P138492	-1.5314	2.1712	0.6398
A_24_P314351	-1.8358	3.0509	1.2151
A_23_P207367	-2.2092	2.8047	0.5955
A_32_P195137	3.2339	2.1932	5.4271
A_24_P38387	-3.0463	2.8995	-0.1468
A_23_P391479	-1.8757	4.4616	2.5859
A_23_P344673	-0.3643	2.4593	2.095
A_23_P214273	-1.5052	2.5293	1.0241
A_32_P204330	-2.6818	2.795	0.1132
A_23_P206441	-2.1401	2.5207	0.3806
A_23_P59869	-2.0219	2.0458	0.0239
A_23_P147514	-2.9129	2.2794	-0.6335
A_23_P62752	-1.794	2.4639	0.6699
A_23_P156953	-1.7175	2.32	0.6025
A_32_P220938	-0.8894	2.7929	1.9035
A_23_P139682	-2.3267	2.1465	-0.1802
A_32_P199292	-2.3102	2.0182	-0.292
A_23_P357101	-2.4554	2.1832	-0.2722
A_32_P42253	-2.7829	2.196	-0.5869
A_24_P32920	-1.5868	2.0132	0.4264
A_23_P401238	-2.1647	3.4221	1.2574
A_24_P269619	-2.5298	2.7001	0.1703
A_32_P128097	-1.1724	3.2294	2.057
A_23_P156620	-0.8806	2.0296	1.149
A_24_P381838	-1.9466	2.3712	0.4246
A_32_P30834	-0.9065	3.5686	2.6621
A_32_P15320	1.9852	2.2422	4.2274
A_24_P342150	-2.896	2.4353	-0.4607
A_23_P394836	-1.254	2.1673	0.9133
A_23_P130764	-2.7679	2.4099	-0.358
A_23_P257003	-2.7349	2.887	0.1521
A_23_P314250	-7.4075	5.0638	-2.3437
A_23_P123362	-1.8528	2.9473	1.0945
A_24_P145216	-0.8068	2.0159	1.2091
A_23_P314811	-2.5147	2.1121	-0.4026
A_32_P137604	-2.3203	2.7265	0.4062
A_24_P135444	-1.6226	3.0999	1.4773
A_32_P148407	-1.1077	2.0301	0.9224
A_23_P310421	-2.4796	2.2079	-0.2717

A_23_P361773	-2.9096	2.5475	-0.3621
A_23_P205216	-1.5319	2.3747	0.8428
A_24_P173566	-1.042	2.1433	1.1013
A_24_P735072	-2.4278	2.4645	0.0367
A_23_P33607	-0.0879	3.0997	3.0118
A_23_P18559	-0.9624	2.5703	1.6079
A_23_P136870	-1.7484	2.5942	0.8458
A_23_P89931	-1.1071	2.0974	0.9903
A_23_P313828	-2.0071	3.069	1.0619
A_23_P30474	0.311	2.3274	2.6384
A_23_P258048	-3.2986	2.3923	-0.9063
A_23_P6335	-3.3503	2.2525	-1.0978
A_23_P18266	-0.2403	2.3621	2.1218
A_24_P928038	-3.2436	2.6426	-0.601
A_24_P161827	-1.3027	2.1451	0.8424
A_23_P208925	-2.9189	2.1918	-0.7271
A_23_P129602	-3.1023	3.2728	0.1705
A_24_P913016	-3.6723	2.8491	-0.8232
A_23_P218058	-2.4561	2.1008	-0.3553
A_24_P732099	0.2368	2.6077	2.8445
A_23_P301896	-1.7863	2.4056	0.6193
A_23_P303087	-3.0347	2.4525	-0.5822
A_24_P406814	-1.2233	2.7556	1.5323
A_23_P131337	-2.1774	2.309	0.1316
A_24_P256243	-0.9315	2.3698	1.4383
A_23_P218937	-0.2546	2.7827	2.5281
A_23_P1038	-1.5864	2.1486	0.5622
A_32_P148507	-2.5629	2.1036	-0.4593
A_23_P72961	-0.3594	2.1516	1.7922
A_24_P345131	-3.1178	2.1523	-0.9655
A_23_P2066	-0.7879	2.5123	1.7244
A_32_P216030	-1.5755	2.2526	0.6771
A_23_P380526	-3.3331	2.4084	-0.9247
A_23_P85024	-2.73	3.0954	0.3654
A_24_P216968	-0.8606	2.1425	1.2819
A_32_P790284	-1.0435	2.3218	1.2783
A_24_P24060	-2.5966	4.075	1.4784
A_23_P112481	-1.7615	2.2033	0.4418
A_23_P36322	-2.04	2.4798	0.4398
A_24_P494501	-2.4757	2.3203	-0.1554
A_32_P143000	-2.6746	2.4234	-0.2512
A_23_P259851	-1.6935	2.0943	0.4008
A_32_P123088	-2.234	2.2174	-0.0166
A_23_P414793	-3.5968	2.2797	-1.3171
A_23_P214011	-1.9233	2.4088	0.4855
A_32_P101039	-2.4676	3.0653	0.5977
A_23_P18903	-1.2587	2.1323	0.8736
A_23_P204484	-1.3044	2.9478	1.6434
A_23_P401580	-0.1196	4.0128	3.8932
A_32_P125135	-0.4538	2.1657	1.7119
A_23_P207445	-0.0022	2.3398	2.3376
A_23_P169233	-2.3102	2.2223	-0.0879

A_32_P83000	-1.9862	2.0527	0.0665
A_23_P3502	-2.0668	2.2615	0.1947
A_23_P27265	-1.8121	2.1017	0.2896
A_32_P214503	-3.5111	2.2624	-1.2487
A_24_P190472	-2.8956	3.5004	0.6048
A_24_P21056	-1.573	2.2867	0.7137
A_23_P144438	-3.7708	2.2597	-1.5111
A_23_P315892	-2.9421	2.327	-0.6151
A_32_P105730	-1.7308	2.7667	1.0359
A_23_P500936	-1.9692	2.1299	0.1607
A_23_P500614	-1.9004	3.3963	1.4959
A_23_P50646	-0.5676	2.0892	1.5216
A_23_P333330	-1.8053	2.671	0.8657
A_32_P453321	-2.7612	2.3786	-0.3826
A_32_P93045	-1.8602	2.4574	0.5972
A_23_P108673	0.6908	2.0374	2.7282
A_23_P404821	-2.8312	2.1151	-0.7161
A_24_P392109	-1.1864	2.3489	1.1625
A_24_P92823	-2.2004	3.2691	1.0687
A_23_P122216	-7.2587	6.168	-1.0907
A_23_P102575	-2.9205	2.3532	-0.5673
A_23_P210763	-2.7955	2.9123	0.1168
A_23_P69242	-3.0494	3.475	0.4256
A_23_P215275	-1.9407	2.211	0.2703
A_23_P94118	-0.3081	2.4476	2.1395
A_24_P255645	-2.9874	3.1991	0.2117
A_23_P216071	-0.009	2.0075	1.9985
A_23_P166336	-3.2364	3.0061	-0.2303
A_23_P250813	-7.4051	7.0516	-0.3535
A_32_P127501	-4.7201	4.4576	-0.2625
A_24_P138713	-1.9909	2.3622	0.3713
A_24_P924261	-7.2521	3.9012	-3.3509
A_24_P34568	-2.7048	2.1421	-0.5627
A_23_P204998	-3.3196	2.9491	-0.3705
A_24_P269598	-2.4403	2.1222	-0.3181
A_24_P922838	-2.5566	3.4441	0.8875
A_23_P136552	-2.2826	2.8628	0.5802
A_32_P204722	-3.1785	2.3638	-0.8147
A_24_P81900	-2.1878	3.1582	0.9704
A_23_P15090	-1.4013	3.1858	1.7845
A_24_P15973	-7.2676	4.7958	-2.4718
A_23_P124486	-1.7196	2.7251	1.0055
A_24_P270376	-1.0602	2.652	1.5918
A_23_P308073	-2.3895	2.0148	-0.3747
A_32_P222521	-1.1237	2.3698	1.2461
A_23_P156826	-3.0349	3.3375	0.3026
A_23_P67771	-1.9991	2.7701	0.771
A_23_P95070	-2.3643	2.8871	0.5228
A_23_P161769	-3.4962	2.7547	-0.7415
A_23_P162782	-1.6293	2.1419	0.5126
A_24_P289709	-1.2578	2.3708	1.113
A_23_P66473	-1.341	2.1117	0.7707

A_32_P139505	-2.8916	2.3429	-0.5487
A_23_P124585	-2.9302	2.7397	-0.1905
A_24_P208794	-2.5073	2.0497	-0.4576
A_23_P38085	-2.2575	2.1523	-0.1052
A_24_P12539	-2.7333	2.1424	-0.5909
A_23_P162374	-2.3345	3.8608	1.5263
A_23_P51966	-1.8613	2.2716	0.4103
A_32_P204381	-2.6775	2.3117	-0.3658
A_23_P342910	-1.8343	2.5266	0.6923
A_24_P263259	-1.2364	2.3239	1.0875
A_23_P193	-1.6242	2.6389	1.0147
A_23_P21882	-2.1064	3.0261	0.9197
A_23_P38365	-2.2956	2.3959	0.1003
A_23_P30736	-2.4033	3.2065	0.8032
A_23_P354170	-1.4337	2.1097	0.676
A_23_P40455	-0.3513	2.0171	1.6658
A_32_P71032	-2.3198	2.7167	0.3969
A_23_P214658	-2.7984	2.2137	-0.5847
A_32_P190036	-1.4182	3.0169	1.5987
A_32_P185393	-3.0372	2.3998	-0.6374
A_23_P71926	-1.6958	2.2444	0.5486
A_23_P106174	-2.2249	2.8252	0.6003
A_24_P69095	-2.6061	2.9161	0.31
A_24_P384969	-1.676	4.8003	3.1243
A_23_P68198	-1.8677	3.7271	1.8594
A_23_P123234	-2.4159	2.141	-0.2749
A_24_P282043	-1.3868	3.6243	2.2375
A_32_P147969	-0.9891	2.7953	1.8062
A_23_P136961	-0.8338	2.2413	1.4075
A_23_P71537	-1.923	2.523	0.6
A_32_P130522	-0.6823	3.4578	2.7755
A_23_P155009	-2.3622	2.4429	0.0807
A_23_P205370	-1.3064	2.4087	1.1023
A_23_P385851	-1.6075	2.1144	0.5069
A_23_P319557	-2.2428	4.2009	1.9581
A_23_P54147	-1.3147	2.1564	0.8417
A_23_P27279	-1.1692	2.0203	0.8511
A_24_P44931	-2.2546	2.6363	0.3817
A_24_P923483	-1.3811	2.5322	1.1511
A_24_P531312	-2.5657	2.375	-0.1907
A_24_P370201	-1.7219	2.7245	1.0026
A_23_P125001	-0.4863	2.3195	1.8332
A_32_P97513	-1.0486	2.1904	1.1418
A_23_P149818	-1.1504	2.0905	0.9401
A_24_P304760	-1.9964	2.1984	0.202
A_32_P14721	-1.2122	3.0401	1.8279
A_23_P157620	-2.4576	2.7381	0.2805
A_23_P129174	-2.1668	3.1836	1.0168
A_23_P146325	-2.8106	2.0663	-0.7443
A_24_P728115	-0.9636	2.9398	1.9762
A_23_P106806	-1.8258	2.2546	0.4288
A_23_P116578	-1.1056	2.2763	1.1707

A_24_P404628	-2.629	3.9245	1.2955
A_23_P216556	-2.1021	2.6531	0.551
A_24_P870463	-1.0905	2.9501	1.8596
A_24_P556318	-1.5174	3.3683	1.8509
A_24_P70888	-2.3718	2.2386	-0.1332
A_24_P919916	-1.7055	7.5659	5.8604
A_23_P384405	-1.4005	2.1135	0.713
A_23_P109655	-0.7361	2.1045	1.3684
A_23_P216806	-2.7596	2.0967	-0.6629
A_23_P3424	-2.3376	2.2232	-0.1144
A_32_P47200	-1.9464	3.15	1.2036
A_23_P68511	-2.3109	2.0929	-0.218
A_24_P931598	-2.4972	2.945	0.4478
A_23_P39871	-2.7099	2.2106	-0.4993
A_24_P222165	-2.2642	2.6246	0.3604
A_24_P759674	-1.5706	4.7534	3.1828
A_23_P163455	-2.1263	2.3791	0.2528
A_23_P254353	-1.2207	2.5583	1.3376
A_32_P134772	-2.2163	2.1805	-0.0358
A_24_P272761	-2.4962	2.2044	-0.2918
A_23_P112846	-0.3299	2.0258	1.6959
A_23_P123315	0.4881	2.0575	2.5456
A_32_P193939	-0.8456	3.8417	2.9961
A_23_P305321	-2.3498	2.6497	0.2999
A_24_P401921	-2.1895	2.267	0.0775
A_24_P795594	-2.3958	2.2629	-0.1329
A_23_P115046	-2.59	2.4959	-0.0941
A_24_P925274	-1.0955	2.4184	1.3229
A_32_P202977	-2.8087	2.6321	-0.1766
A_23_P21457	-0.0633	2.0777	2.0144
A_24_P925124	-1.1233	2.2517	1.1284
A_24_P401686	-1.7645	2.7103	0.9458
A_24_P265346	-2.8338	2.6956	-0.1382
A_32_P123788	-2.5072	2.5121	0.0049
A_32_P5150	-2.2784	2.3024	0.024
A_32_P155416	-1.9572	2.0617	0.1045
A_24_P221323	-2.6137	2.4061	-0.2076
A_23_P333420	-2.1025	2.518	0.4155
A_23_P54469	-1.5567	2.7775	1.2208
A_24_P44891	-2.6069	4.0677	1.4608
A_32_P33304	-2.023	2.8581	0.8351
A_24_P889103	-2.4632	2.8324	0.3692
A_23_P251002	-1.3658	2.1659	0.8001
A_24_P103744	-1.6628	2.271	0.6082
A_23_P77223	-1.0517	2.953	1.9013
A_24_P357709	-2.5627	3.2506	0.6879
A_24_P326491	-0.4585	2.8818	2.4233
A_32_P209148	-1.6987	2.9905	1.2918
A_23_P23947	-1.2674	2.3634	1.096
A_23_P167159	-0.8512	5.5067	4.6555
A_23_P169017	0.4129	2.2005	2.6134
A_24_P263310	-0.9721	5.1337	4.1616

A_32_P234591	-0.992	2.4311	1.4391
A_24_P391586	-1.2954	2.2063	0.9109
A_23_P18152	-1.7123	2.0777	0.3654
A_24_P162226	-2.8348	2.0092	-0.8256
A_23_P52109	-0.6372	2.7799	2.1427
A_24_P78862	-2.7099	2.0532	-0.6567
A_32_P113736	-2.2536	2.3317	0.0781
A_24_P204067	-3.0135	4.1532	1.1397
A_23_P84860	-1.1189	2.5008	1.3819
A_24_P929388	-2.5001	2.7064	0.2063
A_32_P50587	-1.4465	2.581	1.1345
A_23_P127339	-1.8102	3.3201	1.5099
A_24_P50972	-1.6545	2.9886	1.3341
A_24_P623782	-1.9896	2.0423	0.0527
A_32_P27479	-2.4068	3.2558	0.849
A_24_P355693	-1.7488	2.0027	0.2539
A_32_P101653	-1.8889	2.8232	0.9343
A_23_P345778	-2.0998	2.1628	0.063
A_24_P698136	-0.4141	2.8326	2.4185
A_23_P109393	-1.7263	2.4049	0.6786

	UNIQID	Gene name
WID:6480720 A_24_P100368	MAP:Xp11.4	DYNLT3 -- dynein, light chain (WID:6480720
WID:6485103 A_23_P375147	MAP:	-- MRNA; cDNA DKFZp686E0042g (WID:6485103
WID:6515818 A_23_P40952	MAP:3p25.1	RAF1 -- v-raf-1 murine leukemia oncogene (WID:6515818
WID:6475693 A_32_P201564	MAP:17q25.1	CD300E -- CD300e molecule (WID:6475693
WID:6494148 A_23_P348257	MAP:12q23.3	NUA1 -- NUA1 family, Nucleosome assembly factor 1 (WID:6494148
WID:6510419 A_24_P938352	MAP:12q15	CPM -- carboxypeptidase (WID:6510419
WID:6489246 A_24_P917123	MAP:6p22.3	MYLIP -- myosin regulatory protein (WID:6489246
WID:6506374 A_23_P153070	MAP:17q23.2	BCAS3 -- breast carcinoma associated protein 3 (WID:6506374
WID:6497827 A_24_P900730	MAP:	-- Unknown (WID:6497827
WID:6585756 A_23_P70328	MAP:6p12.3	CENPQ -- centromere protein Q (WID:6585756
WID:6585761 A_23_P6335	MAP:22q11.21	SERPIND1 -- serpin peptidase inhibitor, clade I, member 1 (WID:6585761
WID:6492000 A_24_P118489	MAP:15q11.2	WHAMML1 -- WAS protein (WID:6492000
WID:6497608 A_24_P124325	MAP:	IKZF5 -- IKAROS family zinc finger 5 (WID:6497608
WID:6505633 A_32_P6233	MAP:	-- Transcribed locus (WID:6505633
WID:6482066 A_23_P64173	MAP:11q22.3	CARD16 -- caspase recruitment domain 16 (WID:6482066
WID:6479145 A_23_P378526	MAP:20q13.33	RTEL1 -- regulator of telomere elongation (WID:6479145
WID:6514902 A_24_P291426	MAP:2q11.2	REV1 -- REV1 homolog (WID:6514902
WID:6513086 A_32_P224234	MAP:1p31.3	LOC645195 -- PREDICT (WID:6513086
WID:6488987 A_23_P397347	MAP:6q22.31	MCM9 -- minichromosome maintenance protein 9 (WID:6488987
WID:6501323 A_23_P309739	MAP:6q25.1	ESR1 -- estrogen receptor 1 (WID:6501323
WID:6487384 A_23_P120899	MAP:22q12.3	CSF2RB -- colony stimulating factor 2 receptor beta (WID:6487384
WID:6480399 A_32_P122579	MAP:	EZH2 -- Enhancer of zeste 1 (WID:6480399
WID:6489611 A_23_P426292	MAP:6p21.31	MAPK14 -- mitogen-activated protein kinase 14 (WID:6489611
WID:6482853 A_24_P472055	MAP:	-- Transcribed locus (WID:6482853
WID:6516270 A_24_P59899	MAP:	LAMA1 -- Laminin, alpha 1 (WID:6516270
WID:6478065 A_24_P798709	MAP:	NPAL2 -- NIPA-like domain (WID:6478065
WID:6493745 A_24_P262201	MAP:	SULT1A3 -- sulfotransferase 1A3 (WID:6493745
WID:6500310 A_24_P565908	MAP:	-- Unknown (WID:6500310
WID:6492118 A_32_P55438	MAP:	-- Transcribed locus (WID:6492118
WID:6586072 A_23_P122216	MAP:5q23.1	LOX -- lysyl oxidase (LOX) (WID:6586072
WID:6506899 A_24_P337397	MAP:5q13.2	ANKRA2 -- ankyrin repeat domain 2 (WID:6506899
WID:6485703 A_24_P132019	MAP:	LNPEP -- Leucyl/cystinyl aminopeptidase (WID:6485703
WID:6507479 A_23_P89155	MAP:17q25.1	CDK3 -- cyclin-dependent kinase 3 (WID:6507479
WID:6498109 A_32_P12562	MAP:	-- CDNA clone IMAGE:462000 (WID:6498109
WID:6502550 A_32_P198029	MAP:	-- Transcribed locus (WID:6502550
WID:6478127 A_24_P191664	MAP:3q26.2	GOLIM4 -- golgi integral membrane protein 4 (WID:6478127
WID:6497049 A_24_P40978	MAP:8q24.3	CYHR1 -- cysteine/histidine-rich protein 1 (WID:6497049
WID:6495980 A_23_P217611	MAP:Xq22.1	ARMCM3 -- armadillo repeat domain 3 (WID:6495980
WID:6497966 A_32_P19193	MAP:	-- Unknown (WID:6497966
WID:6476144 A_23_P328729	MAP:4q22.1	KLHL8 -- kelch-like 8 (Drosophila) (WID:6476144
WID:6497764 A_23_P371966	MAP:	FAM171B -- Family with sequence similarity 171, member B (WID:6497764
WID:6486692 A_23_P92499	MAP:4q31.3	TLR2 -- toll-like receptor 2 (WID:6486692
WID:6475844 A_23_P131240	MAP:2p23.3	UBXN2A -- UBX domain protein 2A (WID:6475844
WID:6475549 A_23_P252283	MAP:17q11.2	RNF135 -- ring finger protein 135 (WID:6475549
WID:6517113 A_23_P97923	MAP:10q21.1	PHYHIP1 -- phytyl-CoA hydroxylase (WID:6517113
WID:6501278 A_32_P4433	MAP:	-- Transcribed locus (WID:6501278
WID:6502707 A_23_P60306	MAP:9q33.1	TLR4 -- toll-like receptor 4 (WID:6502707
WID:6487931 A_24_P108262	MAP:17q25.1	SDK2 -- sidekick homolog 2 (WID:6487931
WID:6479161 A_32_P188178	MAP:2q36.3	TRIP12 -- thyroid hormone receptor interacting protein 12 (WID:6479161
WID:6494331 A_24_P943957	MAP:2q33.3	PIP5K3 -- phosphatidylinositol 3-kinase (WID:6494331
WID:6484999 A_24_P107336	MAP:11q25	VPS26B -- vacuolar protein sorting 26B (WID:6484999

WID:6497539	A_23_P212360	MAP:	CCR9 -- Chemokine (C-C r	WID:6497539
WID:6486552	A_32_P15464	MAP:8q12.1	TMEM68 -- transmembra	WID:6486552
WID:6499148	A_23_P215296	MAP:7p14.1	CDC2L5 -- cell division c	WID:6499148
WID:6493099	A_23_P161719	MAP:11q22.3	CWF19L2 -- CWF19-lik	WID:6493099
WID:6481555	A_23_P17192	MAP:2q31.1	RAPGEF4 -- Rap guanin	WID:6481555
WID:6481250	A_24_P196851	MAP:9p13.3	TLN1 -- talin 1 (TLN1), r	WID:6481250
WID:6484813	A_24_P826348	MAP:2q13	ZC3H6 -- zinc finger CCC	WID:6484813
WID:6500307	A_23_P39971	MAP:2p16.2	C2orf30 -- chromosome 2	WID:6500307
WID:6476513	A_32_P409919	MAP:7q11.23	PHTF2 -- putative home	WID:6476513
WID:6474974	A_24_P485219	MAP:Xq21.1	MAGT1 -- magnesium tr	WID:6474974
WID:6503661	A_23_P404893	MAP:16q24.3	AFG3L1 -- AFG3 ATPase	WID:6503661
WID:6501889	A_32_P190682	MAP:	-- Unknown	WID:6501889
WID:6517296	A_24_P598836	MAP:10p11.22	ITGB1 -- integrin, beta	WID:6517296
WID:6505912	A_23_P16354	MAP:19q13.12	ZNF382 -- zinc finger pr	WID:6505912
WID:6491750	A_32_P98940	MAP:	-- Unknown	WID:6491750
WID:6480455	A_23_P3823	MAP:16p11.2	BCKDK -- branched chair	WID:6480455
WID:6509725	A_24_P85942	MAP:2q12.3	GCC2 -- GRIP and coiled	WID:6509725
WID:6493122	A_24_P113131	MAP:17q22	BZRAP1 -- benzodiazapi	WID:6493122
WID:6500126	A_23_P117190	MAP:13q14.11	DNAJC15 -- DnaJ (Hsp	WID:6500126
WID:6499449	A_23_P70634	MAP:6q24.1	NMBR -- neuromedin B r	WID:6499449
WID:6495860	A_23_P372331	MAP:3p26.3	TRNT1 -- tRNA nucleotic	WID:6495860
WID:6489926	A_32_P184746	MAP:	-- Transcribed locus	WID:6489926
WID:6487107	A_24_P406714	MAP:10p12.31	MLLT10 -- myeloid/lym	WID:6487107
WID:6484163	A_32_P115505	MAP:21q21.3	RNF160 -- ring finger pr	WID:6484163
WID:6496613	A_23_P354193	MAP:20p13	TBC1D20 -- TBC1 doma	WID:6496613
WID:6517988	A_23_P153783	MAP:19q13.12	USF2 -- upstream trans	WID:6517988
WID:6506799	A_32_P224638	MAP:	-- Transcribed locus	WID:6506799
WID:6506394	A_23_P88554	MAP:	ADAMTS17 -- ADAM metalk	WID:6506394
WID:6484876	A_23_P432610	MAP:16q12.1	N4BP1 -- NEDD4 bindin	WID:6484876
WID:6495771	A_24_P145633	MAP:1q32.1	GPR37L1 -- G protein-cc	WID:6495771
WID:6501297	A_24_P747443	MAP:	-- Transcribed locus	WID:6501297
WID:6503155	A_24_P557479	MAP:17p13.2	XAF1 -- XIAP associate	WID:6503155
WID:6515721	A_32_P201979	MAP:10q23.32	HECTD2 -- HECT dom	WID:6515721
WID:6476559	A_24_P346431	MAP:7p12.3	TNS3 -- tensin 3 (TNS3)	WID:6476559
WID:6485544	A_24_P253827	MAP:17q12	AP2B1 -- adaptor-relatec	WID:6485544
WID:6492701	A_23_P100754	MAP:17q24.1	SMURF2 -- SMAD spec	WID:6492701
WID:6515556	A_23_P144639	MAP:	TMCO6 -- Transmembrane	WID:6515556
WID:6515634	A_23_P58251	MAP:4p16.1	CPZ -- carboxypeptidase	WID:6515634
WID:6511317	A_24_P607107	MAP:	-- Unknown	WID:6511317
WID:6490567	A_24_P403168	MAP:6p25.2	PRPF4B -- PRP4 pre-mf	WID:6490567
WID:6586506	A_23_P71530	MAP:8q24.12	TNFRSF11B -- tumor ne	WID:6586506
WID:6586520	A_23_P15226	MAP:	-- Unknown	WID:6586520
WID:6502100	A_24_P634530	MAP:16p13.12	FLJ11151 -- hypothetic	WID:6502100
WID:6513277	A_24_P307896	MAP:	GIGYF2 -- GRB10 interactir	WID:6513277
WID:6486291	A_24_P95439	MAP:11p15.4	CARS -- cysteinyl-tRNA	WID:6486291
WID:6497260	A_24_P919668	MAP:	NAPG -- N-ethylmaleimide-	WID:6497260
WID:6488161	A_23_P371787	MAP:14q24.1	KIAA0247 -- KIAA0247 (WID:6488161
WID:6477824	A_24_P918317	MAP:11p15.3	DKK3 -- dickkopf homol	WID:6477824
WID:6483704	A_23_P27048	MAP:17q11.2	TMEM199 -- transmemb	WID:6483704
WID:6516824	A_23_P210224	MAP:2p23.3	DPYSL5 -- dihydropyrimi	WID:6516824
WID:6479052	A_23_P41854	MAP:5p13.1	CARD6 -- caspase recrui	WID:6479052
WID:6495211	A_23_P132378	MAP:22q13.31	CELSR1 -- cadherin, E	WID:6495211

WID:6489937 || A_23_P24616 || MAP:11q24.2 || SIAE -- sialic acid acetyltransferase WID:6489937
WID:6509743 || A_23_P163258 || MAP:15q23 || PARP6 -- poly (ADP-ribose) polymerase 6 WID:6509743
WID:6482919 || A_23_P377376 || MAP:2p14 || ACTR2 -- ARP2 actin-related protein 2 WID:6482919
WID:6488464 || A_23_P113111 || MAP:Xq12 || AR -- androgen receptor WID:6488464
WID:6513962 || A_23_P165783 || MAP:2q37.3 || MLPH -- melanophilin (MELANOPHILIN) WID:6513962
WID:6510094 || A_23_P1505 || MAP:11q13.2 || LRP5 -- low density lipoprotein receptor-related protein 5 WID:6510094
WID:6503058 || A_23_P55731 || MAP:19q13.2 || CIC -- capicua homolog 1 WID:6503058
WID:6502295 || A_23_P360964 || MAP:19q13.32 || DACT3 -- dapper, antiproliferative 3 WID:6502295
WID:6498302 || A_23_P18123 || MAP:3q26.31 || NLGN1 -- neuroligin 1 (NEUROLIGIN) WID:6498302
WID:6496766 || A_24_P887857 || MAP:17q11.2 || KRT17P3 -- PREDICTED KRT17P3 WID:6496766
WID:6495998 || A_23_P385105 || MAP:2q35 || PLCD4 -- phospholipase C domain containing 4 WID:6495998
WID:6495592 || A_23_P126075 || MAP:1q42.2 || KCNK1 -- potassium channel, non-voltage-gated 1 WID:6495592
WID:6492737 || A_23_P102508 || MAP:2p23.3 || SLC5A6 -- solute carrier family 5 member 6 WID:6492737
WID:6514812 || A_24_P225961 || MAP:3p21.31 || DAG1 -- dystroglycan 1 WID:6514812
WID:6586631 || A_23_P122216 || MAP:5q23.1 || LOX -- lysyl oxidase (LOX) WID:6586631
WID:6485628 || A_23_P165343 || MAP:2q14.2 || PTPN4 -- protein tyrosine phosphatase, non-receptor type 4 WID:6485628
WID:6514781 || A_24_P159548 || MAP:17q11.2 || SLC46A1 -- solute carrier family 46 member 1 WID:6514781
WID:6495196 || A_23_P422831 || MAP:9q21.11 || C9orf61 -- chromosome 9 open reading frame 61 WID:6495196
WID:6499343 || A_32_P77989 || MAP:16q12.1 || NETO2 -- neuropilin (NEUROPHILIN) 2 WID:6499343
WID:6476230 || A_23_P103062 || MAP:22q12.2 || RNF185 -- ring finger protein 185 WID:6476230
WID:6514725 || A_24_P89038 || MAP:4p16.1 || LOC93622 -- PREDICTED LOC93622 WID:6514725
WID:6503405 || A_23_P376188 || MAP:10p13 || BEND7 -- BEN domain containing 7 WID:6503405
WID:6505020 || A_24_P32085 || MAP:9p21.2 || MOBKL2B -- MOB1, Mps1-related kinase 2B WID:6505020
WID:6516129 || A_32_P169316 || MAP: || -- Transcribed locus || WID:6516129
WID:6512493 || A_23_P82913 || MAP:8q24.13 || TRMT12 -- tRNA methyltransferase 12 WID:6512493
WID:6476997 || A_24_P288979 || MAP:12q23.2 || GNPTAB -- N-acetylglucosaminyl transferase WID:6476997
WID:6508279 || A_23_P18901 || MAP:5q22.3 || ATG12 -- ATG12 autophagy-related protein 12 WID:6508279
WID:6514649 || A_24_P318836 || MAP:19p13.3 || FZR1 -- fizzy/cell division protein 1 WID:6514649
WID:6494290 || A_23_P351844 || MAP: || CD1B -- CD1b molecule || WID:6494290
WID:6510723 || A_23_P97892 || MAP:10q24.32 || LDB1 -- LIM domain binding 1 WID:6510723
WID:6475682 || A_24_P64918 || MAP:14q23.3 || ZBTB1 -- zinc finger and BTB domain containing 1 WID:6475682
WID:6478662 || A_23_P145644 || MAP:7p12.2 || DDC -- dopa decarboxylase (DOPA DECARBOXYLASE) WID:6478662
WID:6509662 || A_23_P211136 || MAP:21q22.2 || BRWD1 -- bromodomain containing 1 WID:6509662
WID:6517573 || A_23_P101623 || MAP:19q13.43 || ZNF667 -- zinc finger protein 667 WID:6517573
WID:6475338 || A_23_P252928 || MAP:Xq28 || MAGEA12 -- melanoma-associated gene 12 WID:6475338
WID:6497172 || A_23_P132277 || MAP:22q12.3 || MCM5 -- minichromosome maintenance complex component 5 WID:6497172
WID:6481302 || A_24_P74753 || MAP:Xq28 || ATP6AP1 -- ATPase, H+-transporting, class 6, subunit 1 WID:6481302
WID:6488095 || A_24_P339664 || MAP:19p13.3 || NCLN -- nicalin homolog 1 WID:6488095
WID:6498176 || A_32_P171232 || MAP: || -- Transcribed locus || WID:6498176
WID:6487266 || A_24_P119141 || MAP: || PROS1 -- Protein S (alpha) WID:6487266
WID:6518713 || A_23_P411321 || MAP:1q21.3 || LCE1F -- late cornified envelope 1 family class F WID:6518713
WID:6496217 || A_24_P49421 || MAP: || -- Unknown || WID:6496217
WID:6512147 || A_23_P109322 || MAP:21q22.2 || PCP4 -- Purkinje cell protein 4 WID:6512147
WID:6487751 || A_23_P204640 || MAP:12p13.31 || NANOG -- Nanog homeobox gene WID:6487751
WID:6514919 || A_23_P135157 || MAP:9p21.2 || PLAA -- phospholipase A2 WID:6514919
WID:6475738 || A_24_P156288 || MAP:20p11.21 || GZF1 -- GDNF-inducible zinc finger protein 1 WID:6475738
WID:6509851 || A_23_P502320 || MAP:16q22.1 || AGRP -- agouti related protein WID:6509851
WID:6512940 || A_24_P315921 || MAP: || LOC728448 -- Peptidylprolyl isomerase WID:6512940
WID:6488748 || A_23_P137196 || MAP:Xq24 || IL13RA1 -- interleukin 13 receptor alpha 1 WID:6488748
WID:6496257 || A_24_P519504 || MAP: || IGL@ -- Immunoglobulin lambda WID:6496257
WID:6480833 || A_24_P140204 || MAP:3p14.3 || PXK -- PX domain containing 1 WID:6480833
WID:6484664 || A_23_P42065 || MAP:6p12.3 || TNFRSF21 -- tumor necrosis factor receptor superfamily member 21 WID:6484664

WID:6496877 || A_23_P123763 || MAP:9p21.2 || C9orf82 -- chromosome WID:6496877
WID:6488250 || A_32_P107876 || MAP:4q21.21 || FRAS1 -- Fraser syndro WID:6488250
WID:6492904 || A_32_P160537 || MAP: || FGF12 -- Fibroblast growth WID:6492904
WID:6502102 || A_23_P77440 || MAP:16q22.1 || NFATC3 -- nuclear facto WID:6502102
WID:6501464 || A_24_P235131 || MAP:7p22.1 || RNF216 -- ring finger prc WID:6501464
WID:6487677 || A_24_P306214 || MAP:16q24.1 || KIAA1609 -- KIAA1609 (WID:6487677
WID:6474978 || A_32_P211558 || MAP: || C10orf11 -- Chromosome 1 WID:6474978
WID:6503935 || A_32_P175349 || MAP: || LOC100128942 -- Hypothet WID:6503935
WID:6495148 || A_23_P84320 || MAP: || HMx1 -- H6 family homeobo WID:6495148
WID:6478677 || A_23_P339309 || MAP:14q24.3 || LIN52 -- lin-52 homolog WID:6478677
WID:6518423 || A_23_P85201 || MAP:Xq22.2 || PLP1 -- proteolipid protei WID:6518423
WID:6501519 || A_24_P110601 || MAP: || -- Unknown || WID:6501519
WID:6506930 || A_23_P54100 || MAP:14q23.2 || ESR2 -- estrogen recept WID:6506930
WID:6488176 || A_23_P138492 || MAP:10q24.33 || NEURL -- neuralized hc WID:6488176
WID:6488183 || A_24_P314351 || MAP:Xq24 || ZBTB33 -- zinc finger anc WID:6488183
WID:6481655 || A_23_P207367 || MAP:17q21.2 || STAT5A -- signal transd WID:6481655
WID:6483333 || A_32_P195137 || MAP: || RAD21 -- RAD21 homolog (WID:6483333
WID:6504089 || A_24_P38387 || MAP:8q24.22 || NDRG1 -- N-myc downs WID:6504089
WID:6517809 || A_23_P391479 || MAP:12q24.23 || KIAA1853 -- KIAA1853 WID:6517809
WID:6487972 || A_23_P344673 || MAP: || LOC401022 -- Hypothetical WID:6487972
WID:6480583 || A_23_P214273 || MAP: || MUT -- Methylmalonyl Coen WID:6480583
WID:6487210 || A_32_P204330 || MAP: || -- CDNA FLJ36663 fis, clor WID:6487210
WID:6586963 || A_23_P206441 || MAP:16q24.3 || FANCA -- Fanconi anen WID:6586963
WID:6488544 || A_23_P59869 || MAP: || GJC3 -- Gap junction proteir WID:6488544
WID:6504831 || A_23_P147514 || MAP: || RHBDD1 -- Rhomboid dom: WID:6504831
WID:6496696 || A_23_P62752 || MAP:1p36.22 || NPPB -- natriuretic peptir WID:6496696
WID:6517216 || A_23_P156953 || MAP:6q25.3 || IGF2R -- insulin-like grov WID:6517216
WID:6498993 || A_32_P220938 || MAP:10q24.33 || LOC729020 -- rcRPE (l WID:6498993
WID:6478871 || A_23_P139682 || MAP:12p13.31 || PZP -- pregnancy-zone WID:6478871
WID:6506721 || A_32_P199292 || MAP:18q21.32 || LOC728115 -- PREDIC WID:6506721
WID:6500579 || A_23_P357101 || MAP:22q13.1 || APOBEC3F -- apolipoppr WID:6500579
WID:6498709 || A_32_P42253 || MAP: || -- Unknown || WID:6498709
WID:6518501 || A_24_P32920 || MAP: || LOC286467 -- Hypothetical f WID:6518501
WID:6515850 || A_23_P401238 || MAP: || DDHD2 -- DDHD domain cc WID:6515850
WID:6477541 || A_24_P269619 || MAP:8q21.3 || DECR1 -- 2,4-dienoyl Co WID:6477541
WID:6492325 || A_32_P128097 || MAP: || LOC388795 -- Similar to hC WID:6492325
WID:6488303 || A_23_P156620 || MAP:6p22.1 || ZNF184 -- zinc finger prc WID:6488303
WID:6510725 || A_24_P381838 || MAP:15q26.1 || MAN2A2 -- mannosidas WID:6510725
WID:6477788 || A_32_P30834 || MAP:4q35.2 || MGC39584 -- PREDICTE WID:6477788
WID:6513288 || A_32_P15320 || MAP:1p21.3 || LOC440595 -- PREDICTI WID:6513288
WID:6493582 || A_24_P342150 || MAP:15q21.2 || LOC100129387 -- hypot WID:6493582
WID:6480042 || A_23_P394836 || MAP:14q32.33 || INF2 -- inverted formin, WID:6480042
WID:6475891 || A_23_P130764 || MAP:19q13.32 || KCNJ14 -- potassium ir WID:6475891
WID:6478982 || A_23_P257003 || MAP:9q21.13 || PCSK5 -- proprotein cor WID:6478982
WID:6502735 || A_23_P314250 || MAP:9q34.13 || FAM78A -- family with s WID:6502735
WID:6475562 || A_23_P123362 || MAP: || C8orf17 -- Chromosome 8 c WID:6475562
WID:6504436 || A_24_P145216 || MAP: || LOC389906 -- Hypothetical WID:6504436
WID:6477730 || A_23_P314811 || MAP:4p12 || SLC10A4 -- solute carrier WID:6477730
WID:6505171 || A_32_P137604 || MAP: || -- CDNA FLJ13937 fis, clor WID:6505171
WID:6478968 || A_24_P135444 || MAP:16q13 || AMFR -- autocrine motili WID:6478968
WID:6495855 || A_32_P148407 || MAP:2q21.3 || LOC151162 -- hypothetic WID:6495855
WID:6476737 || A_23_P310421 || MAP:7p22.2 || CHST12 -- carbohydrate WID:6476737

WID:6481720 || A_23_P361773 || MAP:6p21.1 || CCND3 -- cyclin D3 (CCIWID:6481720
WID:6474507 || A_23_P205216 || MAP:Xq25 || UTP14A -- UTP14, U3 sr WID:6474507
WID:6508895 || A_24_P173566 || MAP: || IGL@ -- Immunoglobulin lar WID:6508895
WID:6517524 || A_24_P735072 || MAP: || -- Full length insert cDNA c WID:6517524
WID:6499563 || A_23_P33607 || MAP:17q11.2 || C17orf42 -- chromosome WID:6499563
WID:6512529 || A_23_P18559 || MAP:4q31.21 || INPP4B -- inositol polyph WID:6512529
WID:6587069 || A_23_P136870 || MAP:Xq28 || MAGEA6 -- melanoma a WID:6587069
WID:6474959 || A_23_P89931 || MAP:19q13.2 || ZNF574 -- zinc finger prc WID:6474959
WID:6488755 || A_23_P313828 || MAP:17p11.2 || CENPV -- centromere p WID:6488755
WID:6511931 || A_23_P30474 || MAP:5p13.2 || WDR70 -- WD repeat doi WID:6511931
WID:6500215 || A_23_P258048 || MAP: || -- Transcribed locus || WID:6500215
WID:6587113 || A_23_P6335 || MAP:22q11.21 || SERPIND1 -- serpin pep WID:6587113
WID:6505684 || A_23_P18266 || MAP:3p21.31 || TUSC4 -- tumor suppres WID:6505684
WID:6504771 || A_24_P928038 || MAP: || IDE -- Insulin-degrading enz WID:6504771
WID:6498740 || A_24_P161827 || MAP: || -- Unknown || WID:6498740
WID:6505152 || A_23_P208925 || MAP:19p13.3 || SH3GL1 -- SH3-domain WID:6505152
WID:6484996 || A_23_P129602 || MAP:16p13.3 || PRSS21 -- protease, se WID:6484996
WID:6504844 || A_24_P913016 || MAP: || UROS -- Uroporphyrinogen WID:6504844
WID:6512571 || A_23_P218058 || MAP:12p13.2 || KLRC4 -- killer cell lectir WID:6512571
WID:6516838 || A_24_P732099 || MAP:11p15.4 || HBBP1 -- hemoglobin, b WID:6516838
WID:6487058 || A_23_P301896 || MAP:1p36.21 || PRDM2 -- PR domain α WID:6487058
WID:6507213 || A_23_P303087 || MAP:7q33 || PTN -- pleiotrophin (PTN) WID:6507213
WID:6513900 || A_24_P406814 || MAP:10q26.13 || FAM53B -- family with ε WID:6513900
WID:6490084 || A_23_P131337 || MAP:2q35 || SMARCAL1 -- SWI/SNF WID:6490084
WID:6475649 || A_24_P256243 || MAP: || SSX2 -- synovial sarcoma, > WID:6475649
WID:6503684 || A_23_P218937 || MAP:5q31.3 || PCDHGC3 -- protocadhe WID:6503684
WID:6517406 || A_23_P1038 || MAP:1q32.1 || JARID1B -- jumonji, AT ric WID:6517406
WID:6496988 || A_32_P148507 || MAP: || ADAM15 -- ADAM metallo WID:6496988
WID:6501940 || A_23_P72961 || MAP: || PRPS1 -- Phosphoribosyl py WID:6501940
WID:6494188 || A_24_P345131 || MAP:1p22.2 || LRRC8B -- leucine rich r WID:6494188
WID:6489700 || A_23_P2066 || MAP:11p13 || APIP -- APAF1 interacting WID:6489700
WID:6493828 || A_32_P216030 || MAP: || -- Transcribed locus || WID:6493828
WID:6477924 || A_23_P380526 || MAP:3q13.13 || DPPA4 -- developmenta WID:6477924
WID:6512145 || A_23_P85024 || MAP:Xq26.3 || ARHGEF6 -- Rac/Cdc42 WID:6512145
WID:6483273 || A_24_P216968 || MAP:1q32.1 || NUCKS1 -- nuclear case WID:6483273
WID:6503540 || A_32_P790284 || MAP:18q21.1 || KATNAL2 -- katanin p6C WID:6503540
WID:6486110 || A_24_P24060 || MAP: || RHOXF2B -- Rhox homeobc WID:6486110
WID:6479893 || A_23_P112481 || MAP:9p13.3 || AQP3 -- aquaporin 3 (Gil WID:6479893
WID:6477288 || A_23_P36322 || MAP:11q13.4 || INPPL1 -- inositol polyph WID:6477288
WID:6497298 || A_24_P494501 || MAP: || LOC400236 -- Hypothetical WID:6497298
WID:6474564 || A_32_P143000 || MAP:15q13.1 || KIAA0574 -- KIAA0574 | WID:6474564
WID:6518103 || A_23_P259851 || MAP: || ADAMTS19 -- ADAM metall WID:6518103
WID:6501652 || A_32_P123088 || MAP:5q22.3 || TICAM2 -- toll-like recepi WID:6501652
WID:6477048 || A_23_P414793 || MAP:3q24 || CP -- ceruloplasmin (ferrc WID:6477048
WID:6494488 || A_23_P214011 || MAP:5p13.3 || CDH6 -- cadherin 6, type WID:6494488
WID:6487601 || A_32_P101039 || MAP: || -- Transcribed locus || WID:6487601
WID:6493500 || A_23_P18903 || MAP:5q33.3 || HAVCR2 -- hepatitis A vir WID:6493500
WID:6489974 || A_23_P204484 || MAP:12q24.23 || RAB35 -- RAB35, mem WID:6489974
WID:6513268 || A_23_P401580 || MAP:5q35.3 || RMND5B -- required for WID:6513268
WID:6513200 || A_32_P125135 || MAP:15q11.2 || CXADRP2 -- coxsackie WID:6513200
WID:6497816 || A_23_P207445 || MAP:17q24.3 || MAP2K6 -- mitogen-acti WID:6497816
WID:6479400 || A_23_P169233 || MAP:9q22.33 || ZNF510 -- zinc finger pr WID:6479400

WID:6502711	A_32_P83000	MAP:17q21.31	LOC388387 -- hypotheti	WID:6502711
WID:6481841	A_23_P3502	MAP:16q24.2	ZC3H18 -- zinc finger CC	WID:6481841
WID:6486896	A_23_P27265	MAP:18q22.1	DSEL -- dermatan sulfat	WID:6486896
WID:6506260	A_32_P214503	MAP:	-- CDNA clone IMAGE:526	WID:6506260
WID:6488011	A_24_P190472	MAP:20q13.12	SLPI -- secretory leuko	WID:6488011
WID:6505959	A_24_P21056	MAP:7p21.3	PHF14 -- PHD finger prot	WID:6505959
WID:6478747	A_23_P144438	MAP:4p15.32	C4orf30 -- chromosome	WID:6478747
WID:6481039	A_23_P315892	MAP:9q34.11	ST6GALNAC6 -- ST6 (a	WID:6481039
WID:6485248	A_32_P105730	MAP:	-- Transcribed locus	WID:6485248
WID:6477280	A_23_P500936	MAP:20p11.21	FOXA2 -- forkhead box	WID:6477280
WID:6506591	A_23_P500614	MAP:1p36.22	TNFRSF8 -- tumor necr	WID:6506591
WID:6482901	A_23_P50646	MAP:19q13.31	LOC390940 -- PREDIC	WID:6482901
WID:6486207	A_23_P333330	MAP:	ZDHHC24 -- Zinc finger, D	WID:6486207
WID:6501213	A_32_P453321	MAP:1p34.1	NCRNA00082 -- non-pro	WID:6501213
WID:6475777	A_32_P93045	MAP:	-- MRNA; cDNA DKFZp564	WID:6475777
WID:6496567	A_23_P108673	MAP:2p12	FAM176A -- family with s	WID:6496567
WID:6480689	A_23_P404821	MAP:7q34	KIAA1147 -- KIAA1147 (k	WID:6480689
WID:6507083	A_24_P392109	MAP:16q23.2	CENPN -- centromere p	WID:6507083
WID:6489361	A_24_P92823	MAP:	-- Unknown	WID:6489361
WID:6587453	A_23_P122216	MAP:5q23.1	LOX -- lysyl oxidase (LO	WID:6587453
WID:6489424	A_23_P102575	MAP:20q13.33	SLC2A4RG -- SLC2A4	WID:6489424
WID:6486716	A_23_P210763	MAP:20p12.2	JAG1 -- jagged 1 (Alagil	WID:6486716
WID:6495539	A_23_P69242	MAP:3p26.2	SUMF1 -- sulfatase modif	WID:6495539
WID:6475745	A_23_P215275	MAP:	-- CDNA clone IMAGE:658	WID:6475745
WID:6482576	A_23_P94118	MAP:8p12	GTF2E2 -- general transc	WID:6482576
WID:6493991	A_24_P255645	MAP:3q26.1	IFT80 -- intraflagellar tra	WID:6493991
WID:6479593	A_23_P216071	MAP:	-- Unknown	WID:6479593
WID:6498655	A_23_P166336	MAP:22q11.21	TMEM191A -- transmer	WID:6498655
WID:6587487	A_23_P250813	MAP:8p12	WRN -- Werner syndrom	WID:6587487
WID:6496038	A_32_P127501	MAP:	CACNB2 -- Calcium channe	WID:6496038
WID:6479609	A_24_P138713	MAP:16q12.1	HEATR3 -- HEAT repea	WID:6479609
WID:6489325	A_24_P924261	MAP:6p24.1	HERV-FRD -- HERV-FR	WID:6489325
WID:6503608	A_24_P34568	MAP:2q21.1	FAM123C -- family with s	WID:6503608
WID:6511346	A_23_P204998	MAP:13q32.2	FARP1 -- FERM, RhoGI	WID:6511346
WID:6487400	A_24_P269598	MAP:	ENTPD4 -- Ectonucleoside	WID:6487400
WID:6511651	A_24_P922838	MAP:	DDHD2 -- DDHD domain cc	WID:6511651
WID:6498633	A_23_P136552	MAP:4p16.3	PIGG -- phosphatidylinos	WID:6498633
WID:6508428	A_32_P204722	MAP:16q22.3	LOC645726 -- PREDIC	WID:6508428
WID:6513628	A_24_P81900	MAP:12p13.31	SLC2A3 -- solute carrier	WID:6513628
WID:6515773	A_23_P15090	MAP:16q12.1	DNAJA2 -- DnaJ (Hsp40	WID:6515773
WID:6483335	A_24_P15973	MAP:	-- Unknown	WID:6483335
WID:6475004	A_23_P124486	MAP:15q24.2	PTPN9 -- protein tyrosin	WID:6475004
WID:6509838	A_24_P270376	MAP:13q14.12	NUFIP1 -- nuclear fragi	WID:6509838
WID:6518100	A_23_P308073	MAP:13q12.12	SACS -- spastic ataxia	WID:6518100
WID:6489731	A_32_P222521	MAP:	-- Transcribed locus	WID:6489731
WID:6475912	A_23_P156826	MAP:6p24.1	C6orf105 -- chromosome	WID:6475912
WID:6515479	A_23_P67771	MAP:2q35	BARD1 -- BRCA1 associa	WID:6515479
WID:6496211	A_23_P95070	MAP:	-- CDNA FLJ12345 fis, clon	WID:6496211
WID:6491077	A_23_P161769	MAP:11q23.3	FXYD2 -- FXYD domain	WID:6491077
WID:6494785	A_23_P162782	MAP:13q33.3	ARGLU1 -- arginine and	WID:6494785
WID:6518257	A_24_P289709	MAP:	HBG2 -- Hemoglobin, gamn	WID:6518257
WID:6512855	A_23_P66473	MAP:17q24.2	PITPNC1 -- phosphatidy	WID:6512855

WID:6510885 || A_32_P139505 || MAP:1p36.21 || KIAA1026 -- kazrin (KIA WID:6510885
WID:6501839 || A_23_P124585 || MAP: || ZNF93 -- Zinc finger protein WID:6501839
WID:6485801 || A_24_P208794 || MAP:3p21.31 || APEH -- N-acylaminoac WID:6485801
WID:6491302 || A_23_P38085 || MAP:16p13.2 || CARHSP1 -- calcium reg WID:6491302
WID:6485159 || A_24_P12539 || MAP:7p14.3 || KBTBD2 -- kelch repeat ε WID:6485159
WID:6513420 || A_23_P162374 || MAP:12q24.13 || DDX54 -- DEAD (Asp-C WID:6513420
WID:6508315 || A_23_P51966 || MAP:1p33 || STIL -- SCL/TAL1 interrup WID:6508315
WID:6497290 || A_32_P204381 || MAP:16q13 || CIAPIN1 -- cytokine indu WID:6497290
WID:6478874 || A_23_P342910 || MAP: || KLHL15 -- Kelch-like 15 (Dr WID:6478874
WID:6500144 || A_24_P263259 || MAP:14q32.2 || CCDC85C -- coiled-coil WID:6500144
WID:6511591 || A_23_P193 || MAP:1p34.2 || DEM1 -- defects in morpho WID:6511591
WID:6505337 || A_23_P21882 || MAP: || -- Unknown || WID:6505337
WID:6502252 || A_23_P38365 || MAP:17q23.2 || TLK2 -- tousled-like kina WID:6502252
WID:6496619 || A_23_P30736 || MAP:6p21.32 || HLA-DOB -- major histoc WID:6496619
WID:6515484 || A_23_P354170 || MAP:3q29 || PIGX -- phosphatidylinosi WID:6515484
WID:6497231 || A_23_P40455 || MAP:21q22.13 || DSCR4 -- Down syndror WID:6497231
WID:6478172 || A_32_P71032 || MAP: || -- Transcribed locus || WID:6478172
WID:6495170 || A_23_P214658 || MAP:6p21.32 || PBX2 -- pre-B-cell leuke WID:6495170
WID:6484300 || A_32_P190036 || MAP: || LOC441964 -- Hypothetical WID:6484300
WID:6489873 || A_32_P185393 || MAP: || -- Transcribed locus || WID:6489873
WID:6486797 || A_23_P71926 || MAP:9q21.11 || PRKACG -- protein kinas WID:6486797
WID:6475710 || A_23_P106174 || MAP: || PSEN1 -- Presenilin 1 || WID:6475710
WID:6515702 || A_24_P69095 || MAP:5q13.3 || ENC1 -- ectodermal-neur WID:6515702
WID:6487542 || A_24_P384969 || MAP: || -- Homo sapiens, clone IM/ WID:6487542
WID:6515798 || A_23_P68198 || MAP:2p25.3 || SH3YL1 -- SH3 domain c WID:6515798
WID:6585860 || A_23_P123234 || MAP: || -- Unknown || WID:6585860
WID:6488203 || A_24_P282043 || MAP:19q13.41 || ZNF28 -- zinc finger prc WID:6488203
WID:6489671 || A_32_P147969 || MAP: || -- MRNA; cDNA DKFZp586 WID:6489671
WID:6512059 || A_23_P136961 || MAP: || -- Unknown || WID:6512059
WID:6503560 || A_23_P71537 || MAP:8q13.2 || CSPP1 -- centrosome an WID:6503560
WID:6493619 || A_32_P130522 || MAP: || -- Transcribed locus || WID:6493619
WID:6512779 || A_23_P155009 || MAP:22q12.2 || RHBDD3 -- rhomboid dc WID:6512779
WID:6499246 || A_23_P205370 || MAP:14q32.13 || ASB2 -- ankyrin repeat WID:6499246
WID:6508900 || A_23_P385851 || MAP:Xq26.2 || MBNL3 -- muscleblind-lil WID:6508900
WID:6504870 || A_23_P319557 || MAP: || C21orf89 -- Chromosome 2 WID:6504870
WID:6506717 || A_23_P54147 || MAP:14q22.1 || NIN -- ninein (GSK3B int WID:6506717
WID:6516739 || A_23_P27279 || MAP:18q21.31 || NEDD4L -- neural precu WID:6516739
WID:6501515 || A_24_P44931 || MAP:19p13.3 || MPND -- MPN domain α WID:6501515
WID:6496598 || A_24_P923483 || MAP: || SLC6A13 -- Solute carrier fε WID:6496598
WID:6504639 || A_24_P531312 || MAP: || -- Transcribed locus || WID:6504639
WID:6499709 || A_24_P370201 || MAP:19p13.3 || EBI3 -- Epstein-Barr viru WID:6499709
WID:6482994 || A_23_P125001 || MAP:17q25.3 || RAC3 -- ras-related C3 I WID:6482994
WID:6514921 || A_32_P97513 || MAP: || -- Unknown || WID:6514921
WID:6479668 || A_23_P149818 || MAP:10p14 || UPF2 -- UPF2 regulator WID:6479668
WID:6479545 || A_24_P304760 || MAP:15q24.2 || SIN3A -- SIN3 homolog WID:6479545
WID:6507700 || A_32_P14721 || MAP:3p14.3 || DNAH12 -- dynein, axone WID:6507700
WID:6503931 || A_23_P157620 || MAP:8p21.3 || FAM160B2 -- family with WID:6503931
WID:6505646 || A_23_P129174 || MAP:15q23 || LRRC49 -- leucine rich rε WID:6505646
WID:6493658 || A_23_P146325 || MAP:8q24.21 || DDEF1IT1 -- DDEF1 int WID:6493658
WID:6512511 || A_24_P728115 || MAP: || -- CDNA: FLJ21284 fis, cloi WID:6512511
WID:6475412 || A_23_P106806 || MAP:16p13.3 || PRSS27 -- protease, se WID:6475412
WID:6503570 || A_23_P116578 || MAP:11q14.1 || PCF11 -- PCF11, cleavε WID:6503570

WID:6481832 || A_24_P404628 || MAP:22q12.2 || C22orf30 -- chromosom WID:6481832
WID:6516216 || A_23_P216556 || MAP:9q31.3 || EPB41L4B -- erythrocyte WID:6516216
WID:6495244 || A_24_P870463 || MAP: || -- MRNA; cDNA DKFZp434 WID:6495244
WID:6513382 || A_24_P556318 || MAP:11p15.1 || SAA3P -- serum amyloid WID:6513382
WID:6476865 || A_24_P70888 || MAP:22q13.33 || PLXNB2 -- plexin B2 (PI WID:6476865
WID:6488014 || A_24_P919916 || MAP: || PTF1A -- Pancreas specific WID:6488014
WID:6492111 || A_23_P384405 || MAP:8p21.1 || EXTL3 -- exostoses (mu WID:6492111
WID:6502872 || A_23_P109655 || MAP:3q22.3 || TMEM22 -- transmembr WID:6502872
WID:6478969 || A_23_P216806 || MAP:9q21.11 || APBA1 -- amyloid beta (WID:6478969
WID:6505677 || A_23_P3424 || MAP:15q24.1 || RPP25 -- ribonuclease P/ WID:6505677
WID:6477179 || A_32_P47200 || MAP: || DKFZp547E087 -- KIAA022(WID:6477179
WID:6486734 || A_23_P68511 || MAP:20p13 || ANGPT4 -- angiopoietin 4 WID:6486734
WID:6475251 || A_24_P931598 || MAP: || LMAN2 -- Lectin, mannose- WID:6475251
WID:6514310 || A_23_P39871 || MAP:2q36.3 || SLC19A3 -- solute carrier WID:6514310
WID:6494405 || A_24_P222165 || MAP: || GAB1 -- GRB2-associated t WID:6494405
WID:6479308 || A_24_P759674 || MAP:10q24.33 || OBFC1 -- oligonucleotic WID:6479308
WID:6487814 || A_23_P163455 || MAP:15q15.3 || MAP1A -- microtubule-a WID:6487814
WID:6484909 || A_23_P254353 || MAP:9q34.3 || NOXA1 -- NADPH oxida WID:6484909
WID:6480580 || A_32_P134772 || MAP:2q31.2 || LOC100130691 -- hypoth WID:6480580
WID:6483615 || A_24_P272761 || MAP:9q33.2 || DENND1A -- DENN/MAI WID:6483615
WID:6482785 || A_23_P112846 || MAP:4q13.3 || MTHFD2L -- methylenet WID:6482785
WID:6586105 || A_23_P123315 || MAP: || -- CDNA clone IMAGE:482i WID:6586105
WID:6514206 || A_32_P193939 || MAP: || -- CDNA FLJ41316 fis, clor WID:6514206
WID:6491149 || A_23_P305321 || MAP: || C8orf58 -- Chromosome 8 c WID:6491149
WID:6505437 || A_24_P401921 || MAP: || SLC24A1 -- Solute carrier f WID:6505437
WID:6477725 || A_24_P795594 || MAP:11q23.1 || ALG9 -- asparagine-link WID:6477725
WID:6513142 || A_23_P115046 || MAP:1p34.1 || EIF2B3 -- eukaryotic trar WID:6513142
WID:6486231 || A_24_P925274 || MAP: || HMG20A -- high-mobility gr WID:6486231
WID:6514678 || A_32_P202977 || MAP: || -- Transcribed locus || WID:6514678
WID:6512999 || A_23_P21457 || MAP:3q26.1 || NMD3 -- NMD3 homolog WID:6512999
WID:6515953 || A_24_P925124 || MAP: || MBD1 -- Methyl-CpG bindin WID:6515953
WID:6506763 || A_24_P401686 || MAP:17q21.33 || CACNA1G -- calcium cl WID:6506763
WID:6504873 || A_24_P265346 || MAP:17q21.2 || KRT14 -- keratin 14 (KR WID:6504873
WID:6491087 || A_32_P123788 || MAP:19q13.42 || MBOAT7 -- membrane WID:6491087
WID:6484171 || A_32_P5150 || MAP: || -- Unknown || WID:6484171
WID:6492439 || A_32_P155416 || MAP:1p34.1 || ERI3 -- exoribonuclease WID:6492439
WID:6500013 || A_24_P221323 || MAP:3q23 || ZBTB38 -- zinc finger anc WID:6500013
WID:6510110 || A_23_P333420 || MAP:22q13.2 || RANGAP1 -- Ran GTPa WID:6510110
WID:6488411 || A_23_P54469 || MAP:15q24.3 || ISL2 -- ISL LIM homeobc WID:6488411
WID:6509039 || A_24_P44891 || MAP:19p13.13 || TNPO2 -- transportin 2 (WID:6509039
WID:6479789 || A_32_P33304 || MAP: || ANK3 -- Ankyrin 3, node of F WID:6479789
WID:6478384 || A_24_P889103 || MAP: || SUZ12P -- Suppressor of ze WID:6478384
WID:6498031 || A_23_P251002 || MAP: || -- Unknown || WID:6498031
WID:6476759 || A_24_P103744 || MAP: || -- CDNA clone IMAGE:447i WID:6476759
WID:6513234 || A_23_P77223 || MAP:15q26.1 || MESP1 -- mesoderm po WID:6513234
WID:6486363 || A_24_P357709 || MAP:3q27.2 || VPS8 -- vacuolar protein WID:6486363
WID:6518005 || A_24_P326491 || MAP:10p12.1 || MKX -- mohawk homeol WID:6518005
WID:6493784 || A_32_P209148 || MAP:12q22 || LOC144486 -- hypothetic WID:6493784
WID:6489062 || A_23_P23947 || MAP:10p11.23 || MAP3K8 -- mitogen-acti WID:6489062
WID:6474839 || A_23_P167159 || MAP:4q34.1 || SCRG1 -- scrapie respor WID:6474839
WID:6488657 || A_23_P169017 || MAP: || DEFB103A -- defensin, bet WID:6488657
WID:6474860 || A_24_P263310 || MAP:15q26.3 || FAM169B -- family with WID:6474860

WID:6491412	A_32_P234591	MAP:	-- Transcribed locus	WID:6491412
WID:6491743	A_24_P391586	MAP:11q23.3	OAF -- OAF homolog (C	WID:6491743
WID:6479819	A_23_P18152	MAP:3p25.3	ATP2B2 -- ATPase, Ca ⁺	WID:6479819
WID:6498586	A_24_P162226	MAP:12q24.33	RIMBP2 -- RIMS bindin	WID:6498586
WID:6477776	A_23_P52109	MAP:	PRKAA2 -- Protein kinase, A	WID:6477776
WID:6502682	A_24_P78862	MAP:17p13.3	SLC43A2 -- solute carrie	WID:6502682
WID:6509948	A_32_P113736	MAP:	-- Transcribed locus	WID:6509948
WID:6488838	A_24_P204067	MAP:	CD58 -- CD58 molecule	WID:6488838
WID:6488410	A_23_P84860	MAP:3p14.2	FAM107A -- family with s	WID:6488410
WID:6517229	A_24_P929388	MAP:2q35	TMEM169 -- transmembr	WID:6517229
WID:6502639	A_32_P50587	MAP:	-- Transcribed locus	WID:6502639
WID:6514197	A_23_P127339	MAP:10q24.2	PI4K2A -- phosphatidylir	WID:6514197
WID:6503306	A_24_P50972	MAP:15q11.2	LOC283767 -- golgi auto	WID:6503306
WID:6491980	A_24_P623782	MAP:3p12.3	FLJ20518 -- PREDICTE	WID:6491980
WID:6504174	A_32_P27479	MAP:19q13.42	NLRP11 -- NLR family, f	WID:6504174
WID:6481577	A_24_P355693	MAP:11q13.5	ACER3 -- alkaline ceran	WID:6481577
WID:6487158	A_32_P101653	MAP:	-- Transcribed locus	WID:6487158
WID:6492757	A_23_P345778	MAP:11p14.1	C11orf46 -- chromosom	WID:6492757
WID:6511817	A_24_P698136	MAP:4p14	LOC344967 -- PREDICTI	WID:6511817
WID:6517384	A_23_P109393	MAP:22q11.21	ARVCF -- armadillo rep	WID:6517384